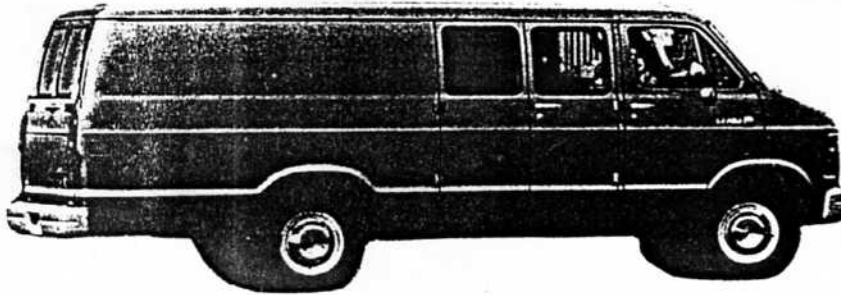


Electric Conversion With 80KW Traction System
(Known as Dual Battery Van/Wagon)

Chassis/Mechanical

Vehicle Body: Dodge Maxi Van or Maxi Wagon. -1986



Dimensions: Wheel Base 127.6" Height 80.6"
Width 79.8" Length 222.9"

Vehicle Weight: 6500 Lbs.

Payload: 2010 Lbs. or 9-15 Passenger

Gross Vehicle Weight: 8510 Lbs.

3 Speed Automatic With Direct Coupler, 2nd for city driving
Drive for highway

Electrical

Dual Battery System: Two Sets of 108V 180AH or 250AH
(20 Hour Rate) either with gel or
immobilized electrolyte, no maintenance
36 Pcs. of 6Volt Modules.

Traction Controls: Separately excited all Transistor Controls
80 KW Rating

Current Capability: 400A/Phase in 2 Phase Design = 800 Ampere
for armature, 20 Ampere for field

Voltage Excursion: 85V low end discharge limit,
130V for Regeneration high end limit

Traction Motor: General Electric Shunt Wound Peak Input 80KW

Cabin Heater: 5 Kilowatt Electric Heat and Heat Pump

Air Conditioner: AC 240V 16 Ampere Hermetic Seal Rotary Pump
System driven by a regulating inverter.

On-Board Dual Charger: 240V Center Neutral, AC current
selectable 30, 20 and 16 Ampere

DC-DC Converter: 12V 80 Ampere Maximum. Low drain design
(No 12V Battery)

Performance

Top Speed: 70 MPH

Acceleration Target: 0 - 30 MPH in 8 - 9 Seconds

Energy Efficiency: 0.65 - 0.8KWHAC/Mile in mixed driving
during warm season

SOLEQ CORPORATION 5969 N. Elston Ave., Chicago, IL 60646 U.S.A.
Telephones: 312-792-3811 FAXES: 312-792-2164 &
312-631-2121 312-792-0315

Right Side of Van

FAN

TEMP
SENSORS

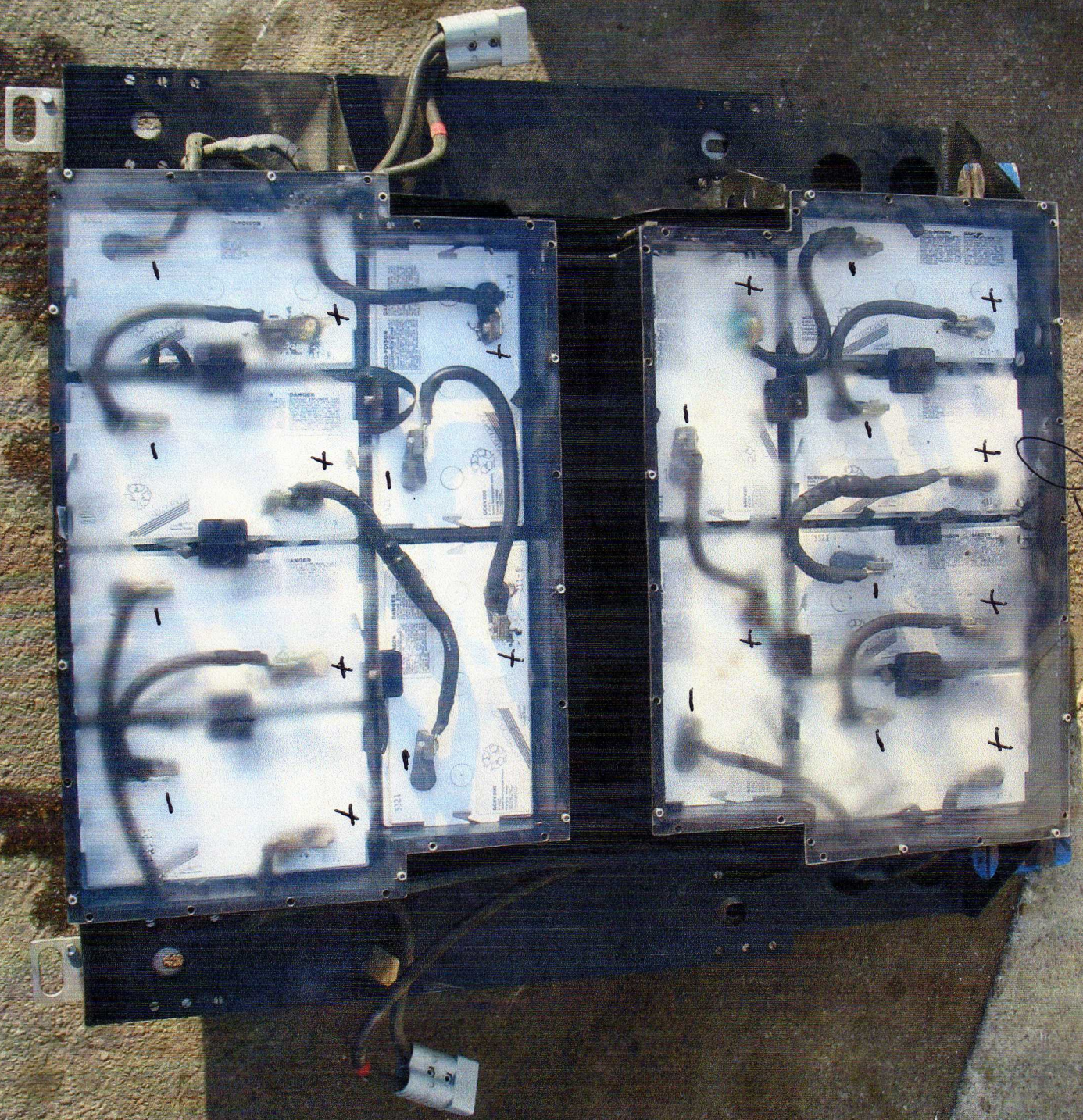


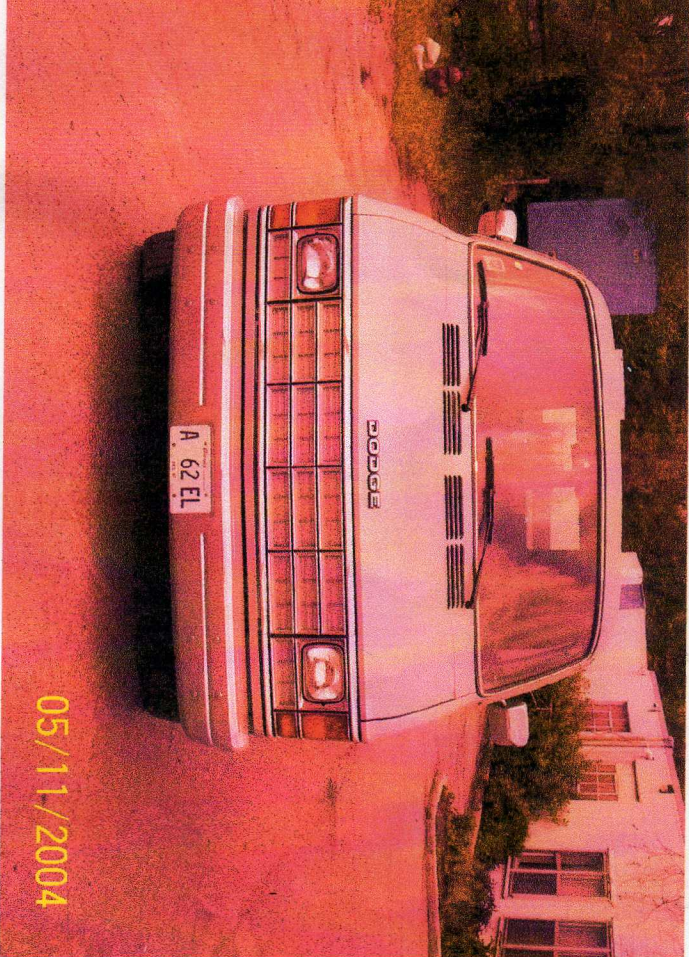


FAN

LEFT
SIDE

Temp Sensor





05/11/2004



05/11/2004

